

Cavus

TV & AUDIO ACCESSORIES

LIVE IN YOUR WORLD, ENJOY OURS



LIVE IN YOUR WORLD, ENJOY OURS

Cavus stands for innovation and service and we are driven by our passion for audio and video. Here at Cavus we will endeavour to help you find a suitable solution in design and functionality. Cavus specializes in creating optimal viewing, gaming and listening experiences. We have developed bespoke products for both new and existing televisions, speakers and soundbars and you can integrate these products into your home in a stylish way. Cavus are proud of the high rating we receive from our customers and are grateful for their loyalty.

TABLE OF CONTENTS

LIVE IN YOUR WORLD, ENJOY OURS



CAVUS GATE

ALWAYS A SOLUTION FOR YOUR TV

The Cavus television floor stands are suitable for any television with a VESA mount. The floor stand can be adapted to any make or model of television you have. Cavus have made a bespoke mounting plate for each VESA size. When you buy a new television with a different VESA mount, replacing the mounting plate is enough

THE BEST VIEWING EXPERIENCE

After a busy day it is great to relax and enjoy your favorite programs. The Cavus television floor stands are adjustable in height and can be rotated 120°. We can assure you that you will have the best viewing height and will always look straight into the television, this will allow you to experience the best brightness and the most beautiful contrast.

FULL OPTIONS TV FURNITURE

Does the minimalistic design of a television floor stand appeal to you? We are often asked whether other equipment can be attached to our Cavus floor stand. With the help of optional accessories you can simply attach a television box or soundbar to the intended accessory points, which are located on the back and are threaded.

NO VISIBLE CABLES

The well thought-out cable management of our Cavus television floor stand has many advantages. Cables often cause great annoyance but they are really necessary to get everything working. There is sufficient space for all cables in the hollow column, smart cutouts at the back of a column make cable management very easy.



Bespoke VESA mounting plate

CAVUS GATE

PERFECT CORNER SETUP
COMPACT ROUND BASE

SPACE SAVING
MINIMALIST DESIGN

BEST VIEWING EXPERIENCE
HEIGHT ADJUSTABLE

LOOK STRAIGHT INTO THE TV
120° SWIVEL



- Ø 38 cm round base
- Brushed stainless steel or trendy black steel
- Available in height 100 or 120 cm
- Cable management in hollow Ø 50 mm column
- Expandable with optional accessories
- Bespoke VESA mounting plate



A PERFECT CORNER SETUP

The Cavus Gate is suitable for televisions up to 40 inches. A television floor stand with a compact round base is ideal as a corner unit and can be situated in smaller living rooms or bedrooms. The minimalist design will provide an extra spatial effect in any interior.

| Model | Height | Colour | VESA | VESA Mounting Plate Options | | | | | | |
|--|-------------------|--------|--------|-----------------------------|-----------|-----------|-----------|------------------------|------------------------|-----------|
| GATE | | | | | | | | | | |
| Choose the version for your television | Total height (cm) | | Silver | Black | 100 x 200 | 200 x 200 | 300 x 300 | 300 x 200 400 x 200 | 300 x 400 400 x 300 | 400 x 400 |
| | | 100 | 120 | S | B | 21 | 22 | 33 | 42 | 43 |

CAVUS TILE

HIGH END DESIGN
HIGH-QUALITY MATERIALS

BEST VIEWING EXPERIENCE
HEIGHT ADJUSTABLE

LOOK STRAIGHT INTO THE TV
120° SWIVEL



SPACE-SAVING SETUP

The minimalist design and the sleek rectangular base of a Cavus Tile is suitable for televisions up to 40 inches. The Cavus television stand can be moved around easily with the added advantage of an optional set of wheels which is very useful if you want to move your television quickly and effortlessly.

| Model | Height | Colour | VESA | | | | | | | | |
|--|-------------------|--------|------|--------|-------|-----------|-----------|-----------|------------------------|------------------------|-----------|
| TILE | | | | | | | | | | | |
| Choose the version for your television | Total height (cm) | | | Silver | Black | 100 x 200 | 200 x 200 | 300 x 300 | 300 x 200 400 x 200 | 300 x 400 400 x 300 | 400 x 400 |
| | | 100 | 120 | S | B | 21 | 22 | 33 | 42 | 43 | 44 |

Example: TILE100B21

CAVUS SPHERE

HIGH END DESIGN
HIGH-QUALITY MATERIALS

FULL TV FURNITURE
OPTIONAL ACCESSORIES

BEST VIEWING EXPERIENCE
HEIGHT ADJUSTABLE

LOOK STRAIGHT INTO THE TV
120° SWIVEL

- Ø54 cm round base
- Brushed stainless steel or trendy black steel
- Available in height 60, 80, 100, 120 or 150 cm
- Cable management in hollow Ø 60 mm column
- Expandable with optional accessories
- Bespoke VESA mounting plate



A soundbar frame is optionally available. Page 19



STYLISH IN EVERY INTERIOR

The fashionable and modern shape of a Cavus Sphere will fit into most interior styles making it one of the best selling television stands on the market. We use high quality materials and the minimalist design will guarantee you a luxurious look. Combine the Sphere with our optional accessories and you can turn your television into a piece of fully-fledged design television furniture.

| Model | Height | Color | VESA |
|--------|--------|-------|------|
| SPHERE | | | |



| Choose the version for your television | Total height(cm) | | | | | Silver | Black | 100 x 200 | 200 x 200 | 300 x 300 | 300 x 200 400 x 200 | 300 x 400 400 x 300 | 400 x 400 | 200 x 200-> 600 x 400 |
|--|------------------|----|-----|-----|-----|--------|-------|-----------|-----------|-----------|------------------------|------------------------|-----------|--------------------------|
| | 60 | 80 | 100 | 120 | 150 | | | | | | | | | |
| | S | B | 21 | 22 | 33 | 42 | 43 | 44 | 64 | | | | | |

CAVUS SQUARE

FULL TV FURNITURE
OPTIONAL ACCESSORIES

BEST VIEWING EXPERIENCE
HEIGHT ADJUSTABLE

LOOK STRAIGHT INTO THE TV
120° SWIVEL



FUNCTIONAL DESIGN

The clean lines of a Cavus Square can be easily integrated into various interior styles, with the right accessories you can attach peripherals to this swivel television floor stand. The rectangular base is prepared for a set of optional wheels with which you can transform this television floor stand into a mobile piece of furniture.

| Model | Height | Colour | VESA | | | | | | | | | | |
|--|-------------------|--------|------|-----|--------|-------|-----------|-----------|-----------|------------------------|------------------------|-----------|--------------------------|
| SQUARE | | | | | | | | | | | | | |
| Choose the version for your television | Total height (cm) | | | | Silver | Black | 100 x 200 | 200 x 200 | 300 x 300 | 300 x 200 400 x 200 | 300 x 400 400 x 300 | 400 x 400 | 200 x 200 > 600 x 400 |
| | 60 | 80 | 100 | 120 | 150 | S | B | 21 | 22 | 33 | 42 | 43 | 44 |

Example: SQUARE120B44

CAVUS CROSS

SPACE SAVING
MINIMALIST DESIGN

FULL TV FURNITURE
OPTIONAL ACCESSORIES

BEST VIEWING EXPERIENCE
HEIGHT ADJUSTABLE

LOOK STRAIGHT INTO THE TV
120° SWIVEL



- Solid oak cross base with shelf
- Available in height 80, 100 or 120 cm
- Brushed stainless steel or trendy black steel
- Cable management in Ø 60 mm hollow column
- Expandable with optional accessories
- Bespoke VESA mounting plate



TIMELESS CHARACTER

The Cavus Cross has a unique and distinctive design. The oak shelf is part of the design. This shelf can support a weight of 5 kg and is suitable for small decorative accessories, a small soundbar or TV decoder. Just like the television, you can adjust this shelf to the desired height.

| Model | Height | Colour | VESA |
|-------|--------|--------|------|
| CROSS | | | |



| Choose the version for your television | Total height(cm) | | | Silver | Black | 100 x 200 | 200 x 200 | 300 x 300 | 300 x 200 400 x 200 | 300 x 400 400 x 300 | 400 x 400 | 200 x 200 > 600 x 400 |
|--|------------------|-----|-----|--------|-------|-----------|-----------|-----------|------------------------|------------------------|-----------|--------------------------|
| | 80 | 100 | 120 | | | | | | | | | |
| | S | B | 21 | 22 | 33 | 42 | 43 | 44 | 64 | | | |

CAVUS TRIANGLE

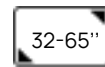
PERFECT CORNER SETUP
COMPACT DESIGN

FULL TV FURNITURE
OPTIONAL ACCESSORIES

BEST VIEWING EXPERIENCE
HEIGHT ADJUSTABLE

LOOK STRAIGHT INTO THE TV
120° SWIVEL

- Solid oak tripod
- Available in height 120 cm
- Trendy black steel column
- Cable management in Ø 60 mm hollow column
- Expandable with optional accessories
- Bespoke VESA mounting plate



THE STRENGTH OF OAKWOOD

The solid oak wood of the Cavus Triangle is extremely strong and has a timeless design. The Cavus triangle is a true eyecatcher for every interior with minimalistic design and maximum functionality television in total balance. With the right accessories you can attach peripherals such as a soundbar or television box. You can hide all cables in the rear leg of this beautiful designed television floorstand

| Model | Height | Colour | VESA |
|----------|--------|--------|------|
| TRIANGLE | 120 | B | |



| Choose the version for your television | Total Height (cm) | | | | Black | 100 x 200 | 200 x 200 | 300 x 300 | 300 x 200 400 x 200 | 300 x 400 400 x 300 | 400 x 400 | 200 x 200 > 600 x 400 |
|--|-------------------|--|--|-----|-------|-----------|-----------|-----------|------------------------|------------------------|-----------|--------------------------|
| | | | | 120 | B | 21 | 22 | 33 | 42 | 43 | 44 | 64 |
| | | | | | | | | | | | | |

Example: TRIANGLE120B44

CAVUS SOLID

PERFECT FOR OLED TV
SLIM COMPACT FOOT

BEST VIEWING EXPERIENCE
HEIGHT ADJUSTABLE

FULL TV FURNITURE
OPTIONAL ACCESSORIES

NO VISIBLE CABLES
CABLE MANAGEMENT

- 75 x 30 cm rectangular base
- Trendy black steel
- Available in height 100 cm
- Cable management in hollow Ø 60 mm column
- Expandable with optional accessories
- Bespoke VESA mounting plate



PERFECT FOR OLED TELEVISIONS

The stylish rectangular base of the Cavus Solid provides a real minimalist look. The base is only 30 cm deep and therefore ideal when the television is in a place where you often walk past. The ratio between the foot and television are completely in balance. Especially if you place a very slim OLED television on it.

A soundbar frame is optionally available. Page 19



| Model | Height | Colour | VESA | | | | | | | |
|--|--------------------|--------|-------|-----------|-----------|-----------|------------------------|------------------------|-----------|------------------------|
| SOLID | | B | | | | | | | | |
| Choose the version for your television | Totale height (cm) | | Black | 100 x 200 | 200 x 200 | 300 x 300 | 300 x 200 400 x 200 | 300 x 400 400 x 300 | 400 x 400 | 200 x 200 600 x 400 |
| | | 100 | B | 21 | 22 | 33 | 42 | 43 | 44 | 64 |

CAVUS ELLIPS

BEST VIEWING EXPERIENCE
HEIGHT ADJUSTABLE

LOOK STRAIGHT INTO THE TV
120° SWIVEL

FULL TV FURNITURE
OPTIONAL ACCESSORIES

NO VISIBLE CABLES
CABLE MANAGEMENT



- 68 x 40 cm oval foot
- Brushed stainless steel or trendy black steel
- Available in height 60, 80, 100, 120 or 150 cm
- Cable management in hollow Ø 60 mm column
- Expandable with optional accessories
- Bespoke VESA mounting plate



STYLISH & STABLE

The oval shape of the Ellips television floor Stand is completely up-to-date and fully in line with current interior trends. Due to the large oval foot the Ellips has more surface area and is therefore very stable which makes the Cavus Ellips suitable for larger televisions. The Ellips television floor stand can be expanded with smart accessories for your peripherals such as a soundbar or a television box.

| Model | Height | Colour | VESA | | | | | | | | | | |
|--|--------------------|--------|------|-----|-----|-------|-----------|-----------|-----------|------------------------|------------------------|-----------|--------------------------|
| ELLIPS | | | | | | | | | | | | | |
| Choose the version for your television | Totale height (cm) | | | | RVS | Zwart | 100 x 200 | 200 x 200 | 300 x 300 | 300 x 200 400 x 200 | 300 x 400 400 x 300 | 400 x 400 | 200 x 200 > 600 x 400 |
| | 60 | 80 | 100 | 120 | 150 | S | B | 21 | 22 | 33 | 42 | 43 | 44 |

Example: ELLIPS100B64

CAVUS ORBIT

SUITABLE FOR LARGE TV'S
EXTRA WIDE FOOT

BEST VIEWING EXPERIENCE
HEIGHT ADJUSTABLE

FULL TV FURNITURE
OPTIONAL ACCESSORIES

LOOK STRAIGHT INTO THE TV
120° SWIVEL

- 98 x 45 cm oval foot
- Brushed stainless steel or trendy black steel
- Available in height 60, 80, 100, 120 or 150 cm
- Cable management in hollow Ø 60 mm column
- Expandable with optional accessories
- Bespoke VESA mounting plate



PERFECT PROPORTIONS

The extra wide oval foot of the Orbit ensures a fantastic ratio between your large television and the television floor stand. The large foot the television floor stand makes it very stable so that you can turn your television in any desired direction without any worries. The Cavus Orbit gives a minimalist look to a large television.

A soundbar frame is optionally available. Page 19

| Model | Height | Colour | VESA | | | | | | | | | | | |
|--|-------------------|--------|------|-----|-----|--------|-------|-----------|-----------|-----------|------------------------|------------------------|-----------|--------------------------|
| ORBIT | | | | | | | | | | | | | | |
| Choose the version for your television | Total height (cm) | | | | | Silver | Black | 100 x 200 | 200 x 200 | 300 x 300 | 300 x 200 400 x 200 | 300 x 400 400 x 300 | 400 x 400 | 200 x 200 > 600 x 400 |
| | 60 | 80 | 100 | 120 | 150 | S | B | 21 | 22 | 33 | 42 | 43 | 44 | 64 |

CAVUS EDGE

SUITABLE FOR LARGE TV'S
EXTRA WIDE FOOT

SPACIOUS
MINIMALIST DESIGN

BEST VIEWING ALTITUDE
ADJUSTABLE TO 8 LEVELS

NO VISIBLE CABLES
CABLE MANAGEMENT

- 90 x 30 cm design base
- Trendy black steel
- Available in height 100 cm
- Cable management in hollow column
- Expandable with optional accessories
- Bespoke VESA mounting plate



INDUSTRIAL PREMIUM DESIGN

We have expanded our range with the unique design of the Cavus Edge. The open industrial character of this television floor stand ensures that even the largest television is integrated into any interior in a spacious and modern way that creates a space-saving setup for your television and peripherals. With the right accessories you can turn any large television into a real design piece of furniture.

| Model | Height | Colour | VESA |
|-------|--------|--------|------|
| EDGE | 100 | B | |



| Choose the version for your television | Total height (cm) | | | Black | 100 x 200 | 200 x 200 | 300 x 300 | 300 x 200 400 x 200 | 300 x 400 400 x 300 | 400 x 400 | 200 x 200 > 600 x 400 |
|--|-------------------|-----|--|-------|-----------|-----------|-----------|------------------------|------------------------|-----------|--------------------------|
| | | 100 | | B | 21 | 22 | 33 | 42 | 43 | 44 | 64 |
| | | | | | | | | | | | |

Example: EDGE100B44

TV FURNITURE BUILT-IN KIT



CAVUS MOUNT



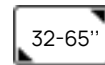
NO VISIBLE CABLES
CABLE MANAGEMENT

BEST VIEWING EXPERIENCE
HEIGHT ADJUSTABLE

LOOK STRAIGHT INTO THE TV
120° SWIVEL

SUITABLE FOR SOUNDBARS
OPTIONAL FRAMES

- Convert a cabinet into a luxury TV furniture
- Brushed stainless steel or trendy black steel
- Available in height 60, 80, 100, 120 or 150 cm
- Cable management in hollow Ø 60 mm column
- Expandable with optional accessories
- Bespoke VESA mounting plate



BUILD YOUR OWN TV FURNITURE

With this handy built-in set you can convert a regular cabinet into a luxury TV cabinet. With the help of a hole saw, you determine where the TV will be placed. With a supplied cover ring (black steel or stainless steel) the saw edge, where the column enters the furniture, is neatly covered. In addition to a fantastic appearance, this system has many more advantages. You are always assured of the best picture and sound because you can turn the television and determine the viewing height.

Do you also have a sound bar? Thanks to the height adjustment, you make room for a soundbar and with the right accessories you can let it rotate with the television. Create the most beautiful arrangement in your interior. With the Cavus Mount you get rid of all visible cables that go to the television. You can easily hide this in the hollow column.

| Model | Height | Colour | VESA | | | | | | | | | | | |
|--|-------------------|--------|------|-----|-----|--------|-------|-----------|-----------|-----------|------------------------|------------------------|-----------|------------------------|
| MOUNT | | | | | | | | | | | | | | |
| Choose the version for your television | Total height (cm) | | | | | Silver | Black | 100 x 200 | 200 x 200 | 300 x 300 | 300 x 200 400 x 200 | 300 x 400 400 x 300 | 400 x 400 | 200 x 200 600 x 400 |
| | 60 | 80 | 100 | 120 | 150 | S | B | 21 | 22 | 33 | 42 | 43 | 44 | 64 |



ACCESSORY HOLDERS

Because it is usually not just about setting up a television, we have also thought of peripherals.

Our TV stands are equipped with mounting points. This allows you to attach all your peripherals with optional accessory holders. On these pages you will find all accessory holders, with which you can quickly and easily create the most beautiful setup.

CAVUS TIP!

USE SMART ACCESSORIES FOR YOUR PERIPHERALS!

ACCESSORY BASIC MOUNTING KIT CHU03

- Mounting plate 342 x 224 mm
- Depth adjustment 47 - 76 mm
- Suitable for the back of the TV (VESA)
- Suitable for wall mounting



Hide a TV decoder or other devices on the back of the TV

ACCESSORY HOLDER M CHU02

- 127 x 128 mm
- Depth adjustment 47 - 76 mm
- Suitable for wall mounting



ACCESSORY HOLDER S CHU02S

- 127 x 128 mm
- Depth adjustment 32 - 46 mm
- Suitable for wall mounting



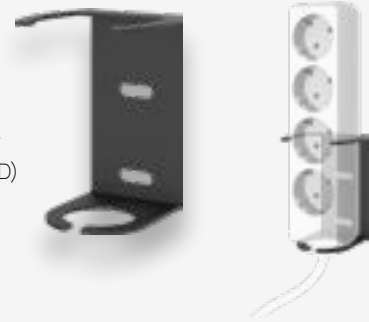
ACCESSORY HOLDERS



Create a power point on the back of the TV

PLUG BLOCK HOLDER CHU04

- Create one central power point
- Attach a power strip to the back of the TV
- Suitable for socket block 45 x 40 mm (WxD)
- Suitable for wall mounting



Create the best soundbar setup



SOUNDBAR HOLDER FOR ARC CAPFSARC

- Designed for the Sonos Arc
- No visible cables



SOUNDBAR HOLDER FOR BEAM CAPFSBEAMB

- Designed for the Sonos Beam
- No visible cables



SOUNDBAR HOLDER UNIVERSAL CAPFSUNIB

- Designed for keyhole & screw thread
- Center distance adjustable from 112 - 908 mm



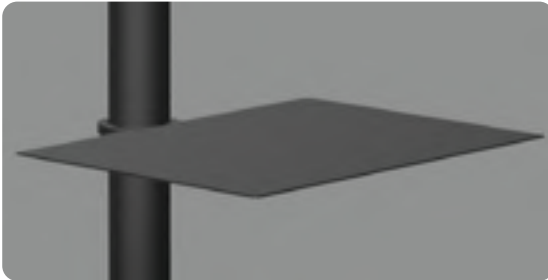
SOUNDBAR HOLDER FOR RAY CAPFSRAYB

- Designed for the Sonos Ray
- No visible cables

ACCESSORY HOLDERS



The soundbar can be individually rotated 120°



For peripherals in sight

COLUMN HOLDER Ø 60 MM FOR SONOS ARC CAV-TSB-ARC

- 120° swivel
- Height adjustable



COLUMN HOLDER Ø 60 MM FOR B&O STAGE CAV-TSB-STAGE

- 120° swivel
- Height adjustable



COLUMN HOLDER Ø 60 MM FOR SOUNDBAR CAV-TSB-UNI

- 120° swivel
- Adjustable from 112 - 908 mm



PLATE FOR Ø 60 MM COLUMN CAV-5M46B

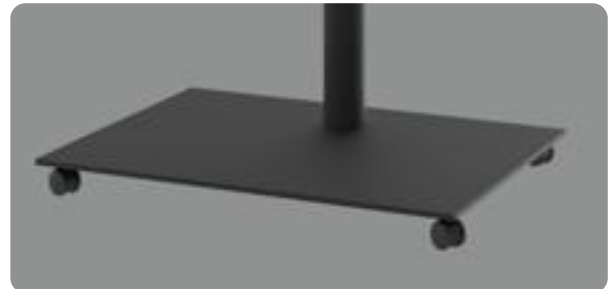
- 400 x 300 x 3 mm
- Height adjustable
- Trendy black steel
- Max. carrying weight 5 kg



WHEELS

WHEEL SET FOR TILE & SQUARE CAV-W30

- Only suitable for the Tile & Square
- Plastic wheels (4 pieces)
- Only suitable for the Tile & Square



Make the Cavus Tile & Square mobile

LIVE IN YOUR WORLD, ENJOY OURS



OP EEN MEUBEL

CAVUS SOLID



SUITABLE FOR LARGE TV'S
EXTRA WIDE FOOT

LOOK STRAIGHT INTO THE TV
120° SWIVEL

BEST VIEWING EXPERIENCE
HEIGHT ADJUSTABLE

NO VISIBLE CABLES
CABLE MANAGEMENT

- 75 x 30 cm rectangular base
- Trendy black steel
- Available in height 60 & 80 cm
- Cable management in hollow Ø 60 mm column
- Expandable with optional accessories
- Bespoke VESA mounting plate



STYLISH, SAFE & FUNCTIONAL

The size of the average television has increased significantly in recent years. We love to watch movies or exciting sporting fixtures on a big screen and thanks to the sturdy and stylish design of the Cavus Solid you can place a large television secure and stable on a piece of furniture. The television base is made of high-quality steel and has a modern black coating.

The Cavus Solid can be expanded with optional accessories. We also have frames for soundbars which you can attach directly under a television. To complete the setup you can place a media holder on the back of the television and attach your television box to the frame saving space and immediately eliminate all visible cables.

| Model | Height | Colour | VESA | | | | | | | |
|--|-------------------|--------|-------|-----------|-----------|-----------|------------------------|------------------------|-----------|--------------------------|
| SOLID | | B | | | | | | | | |
| Choose the version for your television | Total height (cm) | | Black | 100 x 200 | 200 x 200 | 300 x 300 | 300 x 200 400 x 200 | 300 x 400 400 x 300 | 400 x 400 | 200 x 200 > 600 x 400 |
| | 60 | 80 | B | 21 | 22 | 33 | 42 | 43 | 44 | 64 |

Example: SOLID80B44

SWIVEL TV BASE

DESIGN TV BASE MEDIUM

CAVTSM

- Turn your television in the desired direction
- Mount the TV at the desired height
- Design high-gloss black glass base 234 x 485 mm



VESA 100x100 ↔ 400x400



DESIGN TV BASE LARGE

CAVTSL

- Turn your television in the desired direction
- Mount the TV at the desired height
- Design high-gloss black glass base 294 x 545 mm



VESA 200x100 ↔ 600x400

BASIC TV BASE

CAV-T5010

- Turn your television in the desired direction
- Mount the TV at the desired height
- Black glass base 280 x 420 mm



VESA 200x200 ↔ 600x400



LIVE IN YOUR WORLD, ENJOY OURS



CAVUS GATE

We have an extensive range of wallbrackets to suit your needs to create the perfect setup. We can supply and help you choose the bracket to suit your needs. Which ever bracket is needed depends on among other things - the VESA size and how you like to watch television. Are you always sat right in front of your television? Do you want to watch television from different seats in your living room? If so you would need to be able to turn your television. Do you want the television as close as possible on the wall? Do you want to hang your television on the wall?

GESCHIKT VOOR VESA

At the back of a television you'll find four VESA screw holes, these holes are threaded and are used for mounting a television to a wall mount. The distance between these VESA screw holes is expressed in millimeters and the pattern is square or rectangular. You can measure the VESA size by first measuring the horizontal distance and then the vertical distance between these screw holes.

NEED MORE SUPPORT?



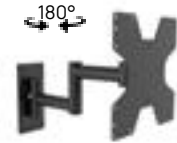
SUPPORT STRIPS WMV-SP01-B

- Create more carrying surface
- For WMV8000/9000 series
- 220 x 40,5 x 12,5 mm

PREMIUM DESIGN

PREMIUM SMALL WMV2050

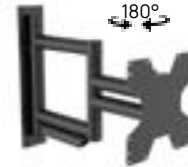
- Trendy black steel
- Tilttable - 8° / +5°
- Level correction 5°



VESA 75x75 | 100x100 | 100x200 | 200x100 | 200x200

PREMIUM HEAVY DUTY WMV8050

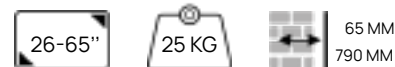
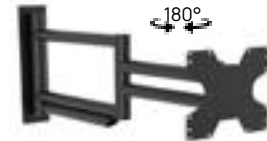
- Trendy black steel
- Three pivot points
- Level correction 5°



VESA 100x100 <-> 400x400

PREMIUM EXTRA LONG WMV9050

- Trendy black steel
- Three pivot points
- Level correction 5°



VESA 100x100 <-> 400x400



We provide a 5-year warranty on our wall mounts, these are supplied including high-quality mounting materials.

FULL MOTION SINGLE 1
WME100

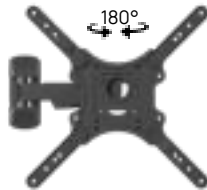
- Tilttable - 8° / +5°
- Level correction 6°



VESA 100x100 | 200x100 | 200x200

FULL MOTION SINGLE 2
WME101

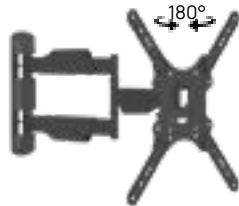
- Tilttable - 8° / +5°
- Level correction 6°



VESA 100x100 | 200x200 | 300x200 | 300x300 | 400x200 | 400x300 | 400x400

FULL MOTION SINGLE 3
WME102

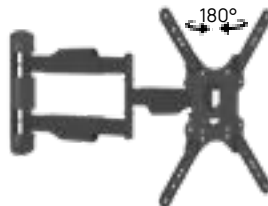
- Tilttable - 8° / +5°
- Level correction 6°



VESA 100x100 | 200x200 | 300x200 | 300x300 | 400x200 | 400x300 | 400x400

FULL MOTION SINGLE 3 XL
WME102L

- Tilttable - 8° / +5°
- Level correction 6°

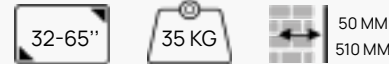
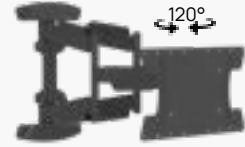


VESA 100x100 | 200x200 | 300x200 | 300x300 | 400x200 | 400x300 | 400x400

FULL MOTION

FULL MOTION OLED
WME104

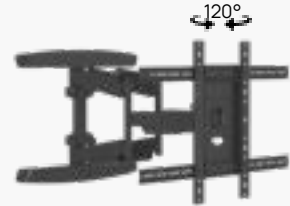
- Tilttable - 15° / +2°
- Level correction 6°



VESA 100x100 | 100x200 | 200x100 | 200x200 | 300x200 | 400x200

FULL MOTION MOUNT
WME105

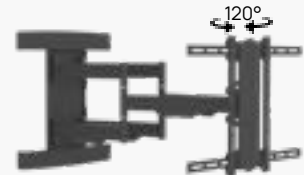
- Tilttable - 8° / +5°
- Level correction 10°



VESA 200x100 <-> 600x400

FULL MOTION HEAVY DUTY
WME602

- Tilttable - 8° / +5°
- Level correction 6°



VESA 200x100 <-> 600x400

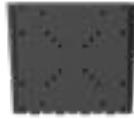


We provide a 5-year warranty on our wall mounts, these are supplied including high-quality mounting materials.

SLIM & TILT

ULTRA SLIM S WMU200

- Compact design
- Loose wall plate



VESA 50x50 | 75x75 | 100x100 | 200x100 | 200x200

ULTRA SLIM L 400 WMF044

- Integrated spirit level
- Lockable *



VESA 75x75 <> 400x400

ULTRA SLIM XL HEAVY DUTY WMF006

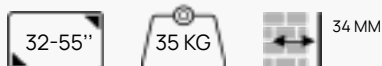
- Including spirit level
- Lockable *



VESA 75x75 <> 800x400

TILT 10° WMT002

- Tilttable -10°
- Including spirit level



75x75 <> 400x400

ULTRA SLIM M WMF001

- Integrated spirit level
- Lockable *



VESA 75x75 | 100x100 | 100x200 | 200x100 | 200x200 | 300x200 | 400x200

ULTRA SLIM L 600 WMF003

- Integrated spirit level
- Lockable *



VESA 75x75 <> 600x400

ULTRA SLIM PREMIUM WMF204

- Integrated spirit level
- level afterwards



VESA 100x100 <> 600x400

PREMIUM TILT 12° WMT205

- Tilttable -12°
- Level correction 6°



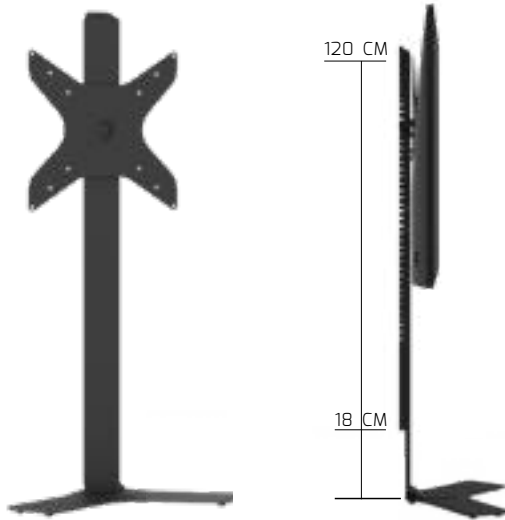
VESA 75x75 <> 400x400

* Padlock not included!



LIVE IN YOUR WORLD, ENJOY OURS

CAVUS HYBRID



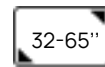
SUITABLE FOR ALL WALLS
NO DRILL HOLES

FITS OVER A HIGH PLINTH
CUTOUT OF 18 CM

BEST VIEWING EXPERIENCE
HEIGHT ADJUSTABLE

NO VISIBLE CABLES
CABLE MANAGEMENT

- The TV just 45 mm from the wall
- Place a piece of furniture over the compact foot
- You hide all cables out of sight in the frame.
- Can be placed over the plinth
- The column can be painted over with latex paint
- Bespoke VESA mounting plate



NO DRILL HOLES IN THE WALL

We have developed the Cavus Hybrid. This product brings together the advantages of a television wall mount and a television floor stand. The sleek space-saving design of a television wall mount and the flexibility of a television stand is combined in one product. With a Cavus Hybrid you get the best of both worlds!

A television wall stand that consists of a compact steel frame that you place against the wall. You can attach the television onto this using a VESA mounting plate. The weight of the television is not placed on the wall but is carried by the frame. There is sufficient space in the frame to hide all cables.

| Model | Height | Colour | VESA | | | | | | |
|--|-------------------|--------|-------|-----------|-----------|-----------|------------------------|------------------------|-----------|
| HYBRID | 120 | B | | | | | | | |
| Choose the version for your television | Total height (cm) | | Black | 100 x 200 | 200 x 200 | 300 x 300 | 300 x 200 400 x 200 | 300 x 400 400 x 300 | 400 x 400 |
| | | 120 | B | 21 | 22 | 33 | 42 | 43 | 44 |

Example on image:HYBRID120B44



VESA SOUNDBAR FRAME

Do you have a soundbar and want to create the best setup with your television? We have the largest range of soundbar and television setup solutions that are suitable for all brands of television mounts with a VESA connection. Our accessories can make the perfect combination between your television and soundbar.

STAINLESS STEEL COVER FOR FRAME CF-DECO-S

- Provides a stainless steel look to a soundbar frame



VESA BRACKETS FOR SOUNDBAR UNIVERSAL SBU01

- Suitable for keyhole & screw thread (rear)
- Suitable for a compact soundbar
- For soundbars that need to connect tight to the TV



VESA WIDTH 100 | 200 | 300 | 400



Suitable for most soundbars from brands such as: JBL, LG, Panasonic, Philips & Sony

VESA FRAME FOR SOUNDBAR UNIVERSAL CFUNIB

- Suitable for keyhole & screw thread (rear/bottom)
- Center distance adjustable from 112 - 908 mm
- Integrated cable management hides all cables



VESA WIDTH 100 | 200 | 300 | 400

ALWAYS A MATCHING SOUNDBAR SOLUTION

| | | | | | |
|---|-------------------------------------|--|---|--|-------------------------------|
| BANG & OLUFSEN BEOSOUND STAGE | BLUESOUND SOUNDBAR + | BLUESOUND PULSE SOUNDBAR 2i | BOSE TV SPEAKER | BOSE SMART SOUNDBAR 300 | BOSE SOUNDBAR 500 |
| | | | | | |
| CFSTAGEB | CFPULSE | CFPULSE | CFUNIB | CFBSS300B | CFBS500 |
| BOSE SMART SOUNDBAR 700 | BOSE SMART SOUNDBAR 900 | BOWERS & WILKINS FORMATION BAR | BOWERS & WILKINS PANORAMA 3 | DENON DHT-S516 | DENON DHT-S517 |
| | | | | | |
| BST300 | CFUNIB | CFBWFBB | CFUNIB | CFDHS516 | CFUNIB |
| DENON HOME SOUNDBAR 550 | DENON DHT-S716 | HARMAN KARDON CITATION BAR | HARMAN KARDON MULTIBEAM 700 | HARMAN KARDON MULTIBEAM 1100 | LOEWE KLANG BAR 5 |
| | | | | | |
| CFUNIB | CFUNIB | CFHKCBAR | CFHKCM700B | CFUNIB | CFCLKBB |
| SAMSUNG A-SERIES (360 MM) | SAMSUNG T-SERIES (360 MM) | SAMSUNG S-SERIES (450 MM) | SAMSUNG Q-SERIES (616 MM) | SONOS ARC ZWART | SONOS ARC WIT |
| | | | | | |
| CFSMG01B | CFSMG01B | CFSMG01B | CFSMG01B | CFSARCB | CFSARCW |
| SONOS BEAM BLACK | SONOS BEAM WHITE | SONOS RAY BLACK | SONOS RAY WHITE | YAMAHA MUSICCAST | UNIVERSEEL SOUNDBAR |
| | | | | | |
| CFSBB | CFSBW | CFSRAYB | CFSRAYW | CFYM01B | CFUNIB |

Is your soundbar not listed? Inquire about the possibilities!



FOR BANG & OLUFSEN

Bang & Olufsen is known for its high quality combined with a beautiful design. Over the years we have developed many accessories for different Bang & Olufsen products. To this day we produce unique accessories which you can create an optimal setup at home.



COLUMN FIXING FOR BEO SOUND STAGE
CAV-T5B-STAGE

- Bespoke design for the B&O Stage
- Suitable for a \varnothing 60 mm column
- 120° Swivel



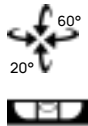
WALL MOUNT FOR B&O BALANCE
CMB0BB

- Bespoke design for the B&O Balance
- High-quality steel with trendy black coating
- Discreet minimalist design



WALL MOUNT FOR BEO PLAY M3
CMBOM3B

- Securely mount your speaker on the wall
- Rotate the speaker in the desired direction
- Extra 34 mm adapter for fixed mounting

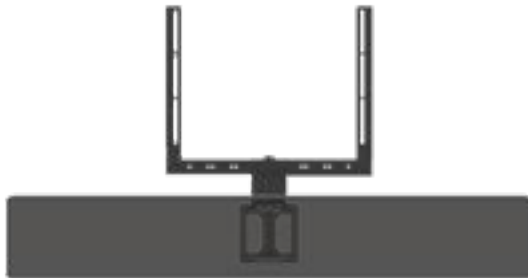


PREMIUM BASE FOR TV & BEOSOUND STAGE SOLID80B44 / CFSTAGE

- Create one TV and soundbar combination
- Picture and sound from the same direction
- Solid 75 x 30 cm base in trendy black steel



Available with a bespoke VESA mounting plate



VESA SOUNDBAR FRAME FOR BEOSOUND STAGE CFSTAGE

- The soundbar rotates with the television
- Integrated cable management hides all cables
- Suitable for TV wall mounts & VESA TV stands



VESA width 100 | 200 | 300 | 400

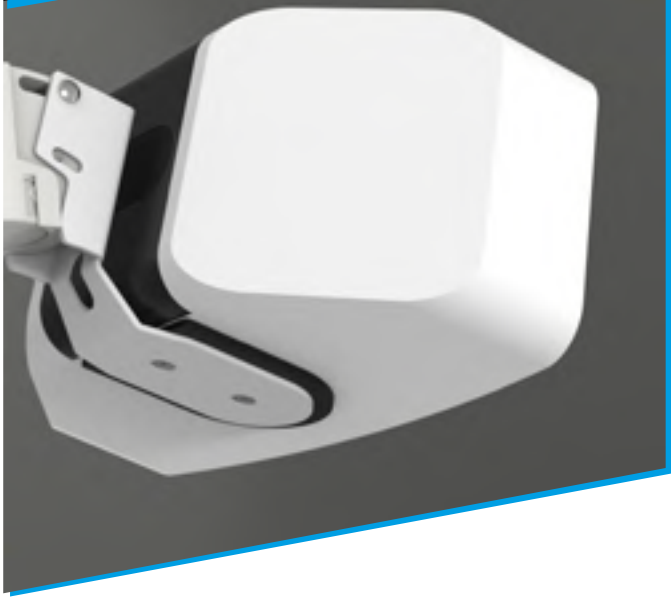


PREMIUM WALL MOUNT FOR TV & BEOSOUND STAGE CC-WMV8050-CFSTAGE

- Create one TV and soundbar combination
- Picture and sound from the same direction
- Single arm with three pivot points

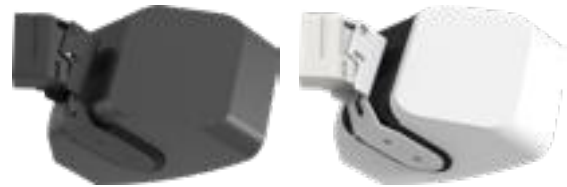


VESA 100x100 \leftrightarrow 400x400



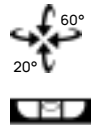
FOR BLUESOUND

If you love musical details, texture and volume, it's no surprise that you chose Bluesound. As a true audio enthusiast you know better than anyone the importance of a good audio setup. Our products are fully tailored to the design, functionality and performance of your Bluesound speaker or soundbar.



WALL MOUNT FOR PULSE MINI (2i) CMBPMB / CMBPMW

- Securely mount your speaker on the wall
- Rotate the speaker in the desired direction
- Extra strong design



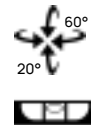
SPEAKER FLOOR STAND FOR PULSE FLEX CSBPFB / CSBPFW

- The speaker can be rotated 60°
- Design foot 230 x 230 mm with adjustable feet
- Hide all cables in the 790mm high column



WALL MOUNT FOR PULSE FLEX CMBPFB / CMBPFW

- Securely mount your speaker on the wall
- Rotate the speaker in the desired direction
- Extra 34 mm adapter for fixed mounting



PREMIUM BASE FOR TV & SOUNDBAR + SOLID80B44 / CFPULSE

- Create one TV and soundbar combination
- Picture and sound from the same direction
- Solid 75 x 30 cm base in trendy black steel



Available with a bespoke VESA mounting plate



VESA SOUNDBAR FRAME FOR PULSE SOUNDBAR + CFPULSE

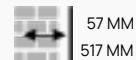
- The soundbar rotates with the television
- Integrated cable management hides all cables
- Suitable for TV wall mounts & VESA TV stands



VESA width 100 | 200 | 300 | 400

WALL MOUNT FOR TV & PULSE SOUNDBAR + CC-WME105-CFPULSE

- Create one TV and soundbar combination
- Picture and sound from the same direction
- Double arm with three pivot points



57 MM
517 MM



VESA 200x100 ↔ 400x400





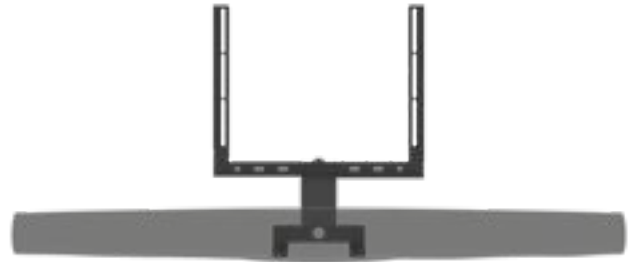
SPEAKER FLOOR STAND VOOR FORMATION FLEX CSBWFB

- The speaker can be rotated 60°
- Design foot 230 x 230 mm with adjustable feet
- Hide all cables in the 790mm high column



FOR BOWERS & WILKINS

Bowers & Wilkins speakers give sound a whole new dimension. The immersive home theater sound from a soundbar provides a real sound experience. To complete your audio experience with our new products for Bowers & Wilkins you can create a setup at home that allows you to optimally enjoy this beautiful sound.



VESA SOUNDBAR FRAME FOR FORMATION BAR CFBWFB

- The soundbar rotates with the television
- Integrated cable management hides all cables
- Suitable for TV wall mounts & VESA TV stands



VESA breedte 100 | 200 | 300 | 400

PREMIUM BASE FOR TV & FORMATION BAR
SOLID80B44 / CFBWFB

- Create one TV and soundbar combination
- Picture and sound from the same direction
- Solid 75 x 30 cm base in trendy black steel



Available with a bespoke VESA mounting plate



WALL MOUNT FOR TV & FORMATION BAR
CC-WME105-CFBWFB

- Create one TV and soundbar combination
- Picture and sound from the same direction
- Double arm with three pivot points



VESA 200x100 <-> 400x400



PREMIUM WALL MOUNT FOR TV & FORMATION BAR
CC-WMV8050-CFBWFB

- Create one TV and soundbar combination
- Picture and sound from the same direction
- Single arm with three pivot points



VESA 100x100 <-> 400x400



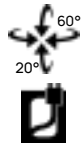
FOR DENON

With the wireless Denon Home speakers you can enjoy the most beautiful music throughout the house. Our products can create the best setup for these speakers and soundbars. We have a wide range of bespoke accessories that meets the design, functionality and performance of your Denon Home products to create the best setup and get the most out of your speakers



CEILING MOUNT FOR HOME 150
CPDH150B / CPDH150W

- Securely mount your speaker to the ceiling
- Rotate the speaker in the desired direction
- Fits over a ceiling distribution box



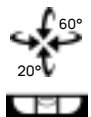
SPEAKER FLOOR STAND FOR HOME 150
CSDH150B / CSDH150W

- The speaker can be rotated 60°
- Design foot 230 x 230 mm with adjustable feet
- Hide all cables in the 790mm high column



WALL MOUNT FOR HOME 150
CMDH150B / CMDH150W

- Securely mount your speaker on the wall
- Rotate the speaker in the desired direction
- Extra 34 mm adapter for fixed mounting





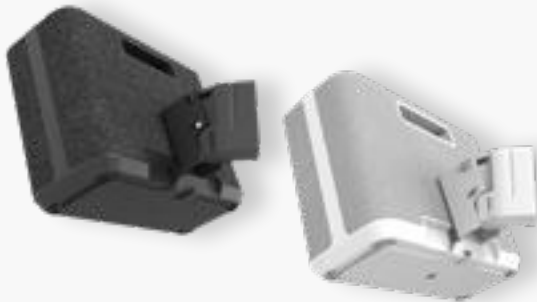
SPEAKER FLOOR STAND FOR HOME 250
CSDH250B / CSDH250W

- The perfect height for your speaker
- Design foot 360 x 195 mm with adjustable feet
- Hide all cables in the 790mm high column



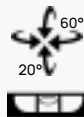
SPEAKER FLOOR STAND FOR HOME 250
CSDH250B / CSDH250W

- The perfect height for your speaker
- Design foot 360 x 195 mm with adjustable feet
- Hide all cables in the 790mm high column



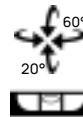
WALL MOUNT FOR HOME 250
CMDH250B / CMDH250W

- Securely mount your speaker on the wall
- Rotate the speaker in the desired direction
- Extra strong design for large speaker



WALL MOUNT FOR HOME 350
CMDH350B / CMDH350W

- Securely mount your speaker on the wall
- Rotate the speaker in the desired direction
- Extra strong design for large speaker

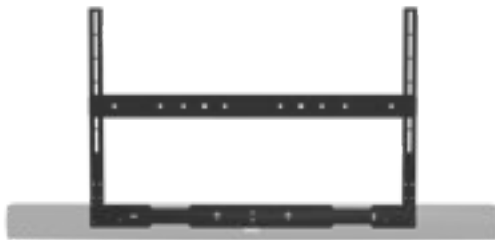


SWIVEL FOOT FOR TV & DHT-5516
CC-CAVTSL-CFDH5516

- Create one TV and soundbar combination
- Picture and sound from the same direction
- High-gloss black glass base 294 x 545 mm



VESA 200x100 ↔ 600x400



VESA SOUNDBAR FRAME FOR DHT-5516
CFDH5516

- The soundbar rotates with the television
- Fits tightly against the bottom of the TV
- Suitable for TV mounts & VESA TV stands



VESA width 100 | 200 | 300 | 400 | 600



WALL MOUNT FOR TV & DHT-5516 SOUNDBAR
CC-WME105-CFDH5516

- Create one TV and soundbar combination
- Picture and sound from the same direction
- Double arm with three pivot points



VESA 200x100 ↔ 400x400



FOR HARMAN KARDON

The deep sounds and innovative technology provide a great home entertainment experience. The Harman Kardon Citation products are instantly recognizable. We have a wide range of products for this line with which you can make a great setup at home. Complete your audio experience with our accessories.



VESA SOUNDBAR FRAME FOR CITATION MULTIBEAM 700
CFHKCM700B

- The soundbar rotates with the television
- Integrated cable management hides all cables
- Suitable for TV wall mounts & VESA TV stands



VESA SOUNDBAR FRAME FOR CITATION BAR
CFHKCBAR

- The soundbar rotates with the television
- Integrated cable management hides all cables
- Suitable for TV wall mounts & VESA TV stands



VESA width 100 | 200 | 300 | 400



FLOOR STANDS FOR CITATION SURROUND
CSHKCSB-SET / CSHKCSW-SET

- The speakers can be rotated 60°
- Design foot 230 x 230 mm with adjustable feet
- Hide all cables in the 790mm high column



FOR HARMAN KARDON



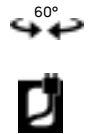
SPEAKER FLOOR STAND FOR CITATION ONE
CSHKCOB / CSHKCOW

- The speaker can be rotated 60°
- Design foot 230 x 230 mm with adjustable feet
- Hide all cables in the 790mm high column



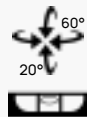
SPEAKER FLOOR STAND FOR CITATION 100
CSHKC100B / CSHKC100W

- The speaker can be rotated 60°
- Design foot 230 x 230 mm with adjustable feet
- Hide all cables in the 790mm high column



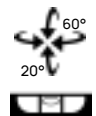
WALL MOUNT FOR CITATION ONE
CMHKCOB / CMHKCOW

- Securely mount your speaker on the wall
- Rotate the speaker in the desired direction
- Extra 34 mm adapter for fixed mounting



WALL MOUNT FOR CITATION 100
CMHKC100B / CMHKC100W

- Securely mount your speaker on the wall
- Rotate the speaker in the desired direction
- Extra 34 mm adapter for fixed mounting





SPEAKER FLOOR STAND FOR CITATION 300
CSHKC300B / CSHKC300W

- The speaker can be rotated 60°
- Design foot 360 x 195 mm with adjustable feet
- Hide all cables in the 790mm high column



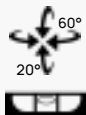
SPEAKER FLOOR STAND FOR CITATION 500
CSHKC500B / CSHKC500W

- The speaker can be rotated 60°
- Design foot 360 x 195 mm with adjustable feet
- Hide all cables in the 790mm high column



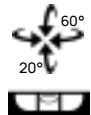
WALL MOUNT FOR CITATION 300
CMHKC300B / CMHKC300W

- Securely mount your speaker on the wall
- Rotate the speaker in the desired direction
- Extra strong design for large speaker



WALL MOUNT FOR CITATION 500
CMHKC500B / CMHKC500W

- Securely mount your speaker on the wall
- Rotate the speaker in the desired direction
- Extra strong design for large speaker





FOR LOEWE

In the world of the innovative brand Loewe you are in the right place when it comes to a perfect balance between award-winning design and an overwhelming sound experience. With Loewe Klang speakers and soundbars you will experience crystal clear sound. Our products for Loewe have been developed to create the most beautiful arrangement and help you get the most out of your speakers at home.



WALL MOUNT FOR KLANG BAR 5
CMLKBB

- The soundbar safely and stylishly on the wall
- Always the best sound from your Loewe Klang Bar 5
- High-quality steel with a trendy black coating



SPEAKER FLOOR STAND FOR KLANG MR1, 3, 5
CSLKMRB

- The speaker can be rotated 60°
- Design foot 310 x 210 mm with adjustable feet
- Hide all cables in the 790 mm high column



PREMIUM BASE TV & KLANG BAR 5
SOLID80B44 / CFLKBB

- Create one TV and soundbar combination
- Picture and sound from the same direction
- Solid 75 x 30 cm base in trendy black steel



Available with a bespoke VESA mounting plate



VESA SOUNDBAR FRAME FOR KLANG BAR 5
CFLKBB

- The soundbar rotates with the television
- Integrated cable management hides all cables
- Suitable for TV wall mounts & VESA TV stands



VESA width 100 | 200 | 300 | 400



PREMIUM WALL MOUNT FOR TV & KLANG BAR 5
CC-WMV8050-CFLKBB

- Create one TV and soundbar combination
- Picture and sound from the same direction
- Single arm with three pivot points



VESA 100x100 <-> 400x400



FOR SAMSUNG

For years Samsung have been at the top when it comes to television sales. Samsung is also one of the best-selling brands in the field of soundbars. Cavus have developed a number of products which make great setups for your television and Samsung soundbar. With Cavus you can make one great combination with your television together with the Samsung soundbar.

The products on this page are only suitable for the following Samsung soundbar series:

- Cinematic Q-series 616 mm
- All-in-one-S-series 450 mm
- Essential A-series 360 mm
- Essential T-series 360 mm

Note: The attachment must be at the bottom of the soundbar!
The distance between these mounting points is 360 mm, 450 mm or 616 mm.



VESA SOUNDBAR FRAME FOR SAMSUNG SOUNDBAR CFSMG01B

- The soundbar rotates with the television
- Integrated cable management hides all cables
- Suitable for TV wall mounts & VESA TV stands



VESA width 100 | 200 | 300 | 400

PREMIUM BASE FOR TV & SAMSUNG SOUNDBAR SOLID80B44 / CF5MG01B

- Create one TV and soundbar combination
- Picture and sound from the same direction
- Solid 75 x 30 cm base in trendy black steel



Available with a bespoke VESA mounting plate



WALL MOUNT FOR TV & SAMSUNG SOUNDBAR CC-WME105-CF5MG01B

- Create one TV and soundbar combination
- Picture and sound from the same direction
- Double arm with three pivot points



VESA 200x100 ↔ 400x400



PREMIUM WALL MOUNT TV & SAMSUNG SOUNDBAR CC-WMV8050-CF5MG01B

- Create one TV and soundbar combination
- Picture and sound from the same direction
- Single arm with three pivot points



VESA 100x100 ↔ 400x400



FOR SONOS

With Cavus products you create the best setup for all your Sonos equipment. We are one of the first to introduce new bespoke solutions for your new speakers or soundbar. Our innovative products are specially designed to match the design and performance of your Sonos equipment and complete your Sonos experience with our accessories.

LIVE IN YOUR WORLD, ENJOY OURS



FURNITURE STAND FOR ONE / ONE SL
CT50B / CT50W

- Direct the sound upwards at 5°
- Design foot in the shape of the speaker
- High-quality steel with premium coating



SPEAKER FLOOR STAND FOR ONE / ONE SL
CSS0B / CSS0W

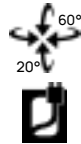
- The speaker can be rotated 60°
- Design foot 230 x 230 mm with adjustable feet
- Hide all cables in the 790mm high column





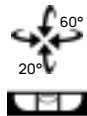
CEILING MOUNT FOR ONE / ONE SL
CPSOB / CPSOW

- Securely mount your speaker to the ceiling
- Rotate the speaker in the desired direction
- Fits over a ceiling distribution box



WALL MOUNT FOR ONE / ONE SL
CMSOB / CMSOW

- Securely mount your speaker on the wall
- Rotate the speaker in the desired direction
- Extra 34 mm adapter for fixed mounting



FIXED WALL MOUNT MOVE
CM5MS

- Stainless steel bracket with extra protective coating
- Suitable for indoor and outdoor use
- Always a fixed place for your Move



FIXED WALL MOUNT ROAM
CM5RB / CM5RW

- 2 mm steel with protective coating
- Only suitable for horizontal installation
- Always a fixed place for your Roam

THE DIFFERENCE BETWEEN A HORIZONTAL AND VERTICAL SETUP

Cavus have products for the Sonos Five with which you can create different setups. To determine which setup suits you best it is important to know how you prefer to listen to your favorite music.

If you place a Sonos Five in a vertical position the speaker works like a conventional one-channel speaker. With two vertical Sonos Five speakers you can create a special setup. In the Sonos app you can connect both vertical speakers and convert them into a stereo pair. Sonos has built in this feature for music lovers who like a pure stereo sound.

If you turn both Sonos Five speakers towards you, you will experience the most dynamics. The place where all the sound comes together is also called the sweet spot.

You can also create a stereo pair from two Sonos Five speakers in a horizontal arrangement. This setup gives slightly less dynamics, but does provide a room-filling sound. Perfect for a room where you want several people to enjoy the music.

The perfect setup remains a personal choice, but if you use one Sonos Five speaker, we recommend that you always choose for a horizontal setup.

FOR SONOS



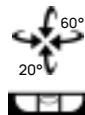
SPEAKER FLOOR STAND FOR FIVE VERTICAL CSP5VB / CSP5VW

- The speaker can be rotated 60°
- Design foot 360 x 195 mm with adjustable feet
- Hide all cables in the 790mm high column



WALL MOUNT FOR FIVE VERTICAL CMP5VB / CMP5VW

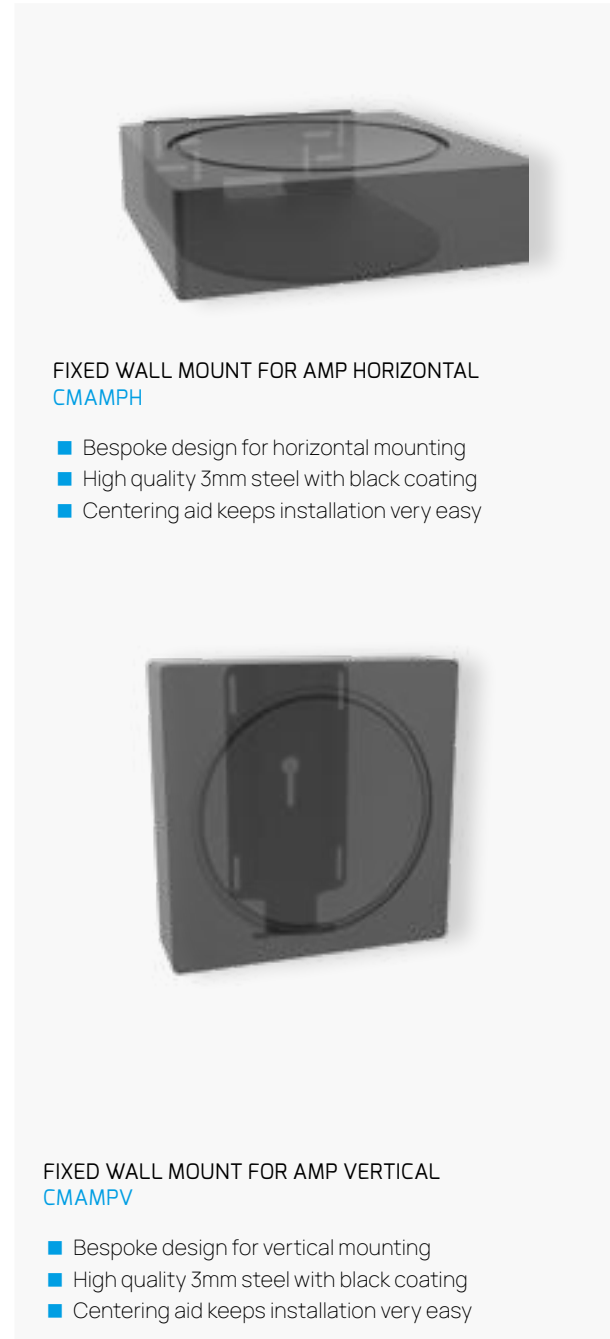
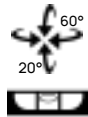
- Securely mount your speaker on the wall
- Rotate the speaker in the desired direction
- Extra strong clamping system secures





WALL MOUNT FOR FIVE HORIZONTAL
CMP5HB / CMP5HW

- Securely mount your speaker on the wall
- Rotate the speaker in the desired direction
- Extra strong clamping system secures speaker



FIXED WALL MOUNT FOR AMP HORIZONTAL
CMAMPH

- Bespoke design for horizontal mounting
- High quality 3mm steel with black coating
- Centering aid keeps installation very easy



SPEAKER FLOOR STAND FOR FIVE HORIZONTAL
CSP5B / CSP5W

- The speaker can be rotated 60°
- Design foot 360 x 195 mm with adjustable feet
- Hide all cables in the 790mm high column



FIXED WALL MOUNT FOR AMP VERTICAL
CMAMPV

- Bespoke design for vertical mounting
- High quality 3mm steel with black coating
- Centering aid keeps installation very easy



FIXED WALL MOUNT FOR RAY
CMSRAYB/ CMSRAYW

- Your soundbar safe and stylish on the wall
- Bespoke design for the Ray soundbar
- Centering aid makes installation easy



FOR SONOS



VESA SOUNDBAR FRAME FOR RAY
CFSRAYB/ CFSRAYW

- The soundbar rotates with the television
- Integrated cable management hides all cables
- Suitable for VESA width 100, 200, 300 & 400



WALL MOUNT SET FOR TV & RAY
CC-WMF044-CMSRAY B/W

- Your TV and soundbar safe and stylish on the wall
- Combination of a WMF044 & CMSRAY B/W
- Comes with mounting material



VESA 75x75 ↔ 400X400



WALL MOUNT FOR TV & RAY
CC-WME105-CFSRAY B/W

- Create one TV and soundbar combination
- Picture and sound from the same direction
- Double arm with three pivot points



VESA 200x100 ↔ 400X400



FIXED WALL MOUNT FOR BEAM CMSBFB/ CMSBFW

- Your soundbar safe and stylish on the wall
- Bespoke design for the Beam soundbar
- Depth adjustment 3 - 25 mm

3 MM
25 MM



VESA SOUNDBAR FRAME FOR BEAM CFSBB/ CFSBW

- The soundbar rotates with the television
- Integrated cable management hides all cables
- Suitable for VESA width 100, 200, 300 & 400



SWIVEL BASE FOR TV & BEAM CC-CAVTSL-SB

- Create one TV and soundbar combination
- Picture and sound from the same direction
- High-gloss black glass base 294 x 545 mm

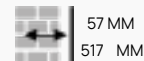


VESA 200x100 ↔ 600x400



WALL MOUNT FOR TV & BEAM CC-WME105-CFSB B/W

- Create one TV and soundbar combination
- Picture and sound from the same direction
- Double arm with three pivot points



VESA 200x100 ↔ 400x400

FOR SONOS



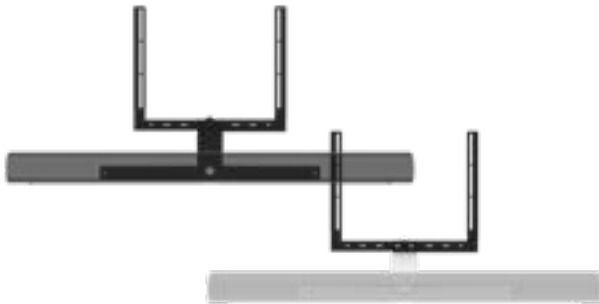
COLUMN FIXING FOR ARC CAV-TSB-ARC

- Bespoke design for the ARC
- Suitable for a Ø60 mm column
- 120° Swivel



FIXED WALL MOUNT FOR ARC CMSARCB/ CMSARCW

- Bespoke design for the ARC
- Integrated sensor communicates with the Arc
- Always the best sound thanks to this sensor



VESA SOUNDBAR FRAME FOR ARC CFSARCB / CFSARCW

- The soundbar rotates with the television
- Integrated cable management hides all cables
- Suitable for VESA width 100, 200, 300 & 400



VESA width 100 | 200 | 300 | 400



SWIVEL BASE FOR TV & ARC CC-CAVTSL-SARC

- Create one TV and soundbar combination
- Picture and sound from the same direction
- High-gloss black glass base 294 x 545 mm



VESA 200x100 ↔ 600x400

PREMIUM BASE FOR TV & ARC
SOLID80B44 / CFSARC

- Create one TV and soundbar combination
- Picture and sound from the same direction
- Solid 75 x 30 cm base in trendy black steel



Available with a bespoke VESA mounting plate



WALL MOUNT FOR TV & ARC
CC-WME105-CFSARC B/W

- Create one TV and soundbar combination
- Picture and sound from the same direction
- Double arm with three pivot points



VESA 200x100 <-> 400x400



PREMIUM WALL MOUNT FOR TV & ARC
CC-WMV8050-CFSARC B/W

- Create one TV and soundbar combination
- Picture and sound from the same direction
- Single arm with three pivot points



VESA 100x100 <-> 400x400



FOR YAMAHA

With Yamaha you experience sound the way it was meant to be. You will hear every detail and feel every vibration. From the instruments of your favorite group to the heaviest explosions of a thrilling action movie Yamaha lets you hear everything to complete your audio experience. With Cavus products you can create the best setup and let your Yamaha speaker or soundbar perform to the maximum.



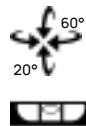
SPEAKER FLOOR STAND FOR MUSICCAST 20 CSY20B / CSY20W

- The speaker can be rotated 60°
- Design foot 230 x 230 mm with adjustable feet
- Hide all cables in the 790mm high column



WALL MOUNT FOR MUSICCAST 20 CMY20B / CMY20W

- Securely mount your speaker on the wall
- Rotate the speaker in the desired direction
- Extra 34 mm adapter for fixed mounting



PREMIUM BASE FOR TV & YAMAHA SOUNDBAR SOLID80B44 / CFYMH01B

- Create one TV and soundbar combination
- Picture and sound from the same direction
- Solid 75 x 30 cm base in trendy black steel



Available with a bespoke VESA mounting plate



VESA SOUNDBAR FRAME VOOR YAMAHA SOUNDBAR CFYMH01B

- The soundbar rotates with the television
- Integrated cable management hides all cables
- Suitable for TV wall mounts & VESA TV stands



VESA width 100 | 200 | 300 | 400

WALL MOUNT FOR TV & YAMAHA SOUNDBAR CC-WME105-CFYMH01B

- Create one TV and soundbar combination
- Picture and sound from the same direction
- Double arm with three pivot points



VESA 200x100 ↔ 400x400



FOR MONITOR



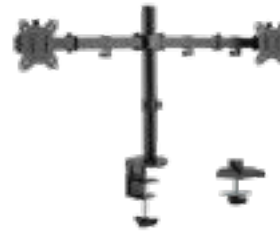
MONITOR MOUNT FOR 1 SCREEN

CAV-DM0101

- Create an ergonomic workplace
- Secure with clamp (10-85mm) or screw system (10-40mm)
- The arm is extendable to 390 mm



VESA 75x75 | 100X100



MONITOR MOUNT FOR 2 SCREENS

CAV-DM0102

- Create an ergonomic workplace
- Secure with clamp (10-85mm) or screw system (10-40mm)
- The arms are extendable to 390 mm



VESA 75x75 | 100X100



GAS SPRING MONITOR MOUNT FOR 1 SCREEN

CAV-DM0301

- Create an ergonomic workplace
- Secure with clamp (10-85mm) or screw system (10-40mm)
- The arm is extendable to 443 mm



VESA 75x75 | 100X100



GAS SPRING MONITOR MOUNT FOR 2 SCREENS

CAV-DM0302

- Create an ergonomic workplace
- Secure with clamp (10-85mm) or screw system (10-40mm)
- The arms are extendable to 443 mm



VESA 75x75 | 100X100

CABLE MANAGEMENT

Complete any setup with a cablesleeve or cablecover. You can enjoy all your beautiful equipment without any distraction from loose cables and with the right accessories you can neatly hide and organize all those cables.



Ø 10 MM SUITABLE FOR 1-2 CABLES

WHITE

SILVER

BLACK

100 CM

CAV-SW1010W

CAV-SW1010S

CAV-SW1010B

150 CM

CAV-SW1015W

CAV-SW1015S

CAV-SW1015B

300 CM

CAV-SW1030W

CAV-SW1030S

CAV-SW1030B

Ø 19 MM SUITABLE FOR 3-4 CABLES

100 CM

CAV-SW1910W

CAV-SW1910S

CAV-SW1910B

150 CM

CAV-SW1915W

CAV-SW1915S

CAV-SW1915B

300 CM

CAV-SW1930W

CAV-SW1930S

CAV-SW1930B

LENGTH 1100 MM

WHITE

SILVER

BLACK

50 MM

MB731356

MB731332

MB731349

33 MM

MB731295

MB731271

MB731288

18 MM

MB731233

MB731219

MB731226

LENGTH 1600 MM

50 MM

MB731387

MB731363

MB731370

33 MM

MB731325

MB731301

MB731318

18 MM

MB731264

MB731240

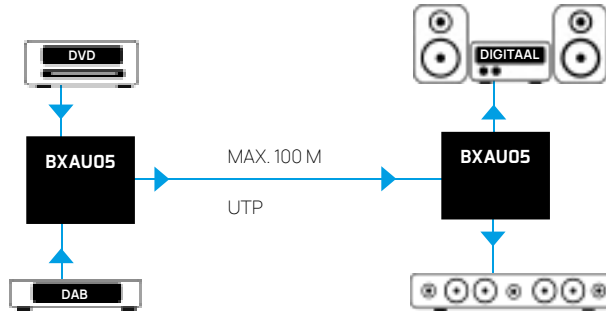
MB731257

A cablesleeve ensures that your loose wiring in the house or office is bundled and is no longer visible. A cablesleeve is easy to use because it is self-closing and will roll up again after the cables have been placed, this makes it easy to get cables in and out of the sleeve. Our luxury cablesleeves are made of finely woven polyester and are available in different colors and sizes, this means that there is a suitable solution for every interior.

Complete your setup with an aluminum cablecover. An aluminum cablecover is a premium storage system for all types of connection cables, not only does it provide a tidy and neat appearance but it also provides the necessary protection to all cables. Our cablecovers are available in different colors and sizes, this means that there is a suitable version for every interior.

DIGITAL AUDIO EXTENDER SET CAV-BXAU05

- Extend Toslink or coaxial audio signal up to 100 meters over UTP
- No signal loss so always the best audio quality

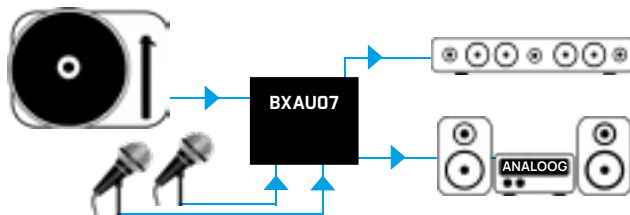


Digital input: 1 x Toslink in, 1 x RCA coaxial
Digital output: 1 x Toslink in, 1 x RCA coaxial

Data speed: 12.8 Mb/s - Sampling rate: 96kHz - POC power over cable
Audio size: PCM, DTS & Dolby Digital audio

AUDIO PRE-AMPLIFIER CAV-BXAU07

- Connect a turntable or microphone to an analog unamplified source
- Suitable for dynamic and condenser microphone.



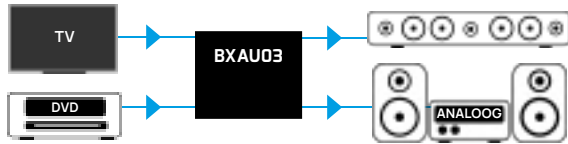
Analog Input: 2 x RCA L/R, 2 x 6.3 mm Jack
Analog output: 2 x RCA L/R

Frequency sensitivity Phono : +1 dB tot 3 dB 30 Hz 20 KHz
Frequency sensitivity Mic : +1 tot 3 dB 70 Hz tot 20 KHz

AUDIO CONVERTER DIGITAL > ANALOG

CAV-BXAU03

- Make an analog amplifier suitable for a digital signal
- Always the best audio signal thanks to the latest technology.



Digital input: 1 x Toslink, 1 x RCA coaxial
Analog output: 2 x RCA L/R, 1 x 3.5 mm Jack

Audio resolution: 32kHz, 44,1kHz, 48kHz, 96kHz en 192kHz, up to 24-bit

AUDIO CONVERTER TOSLINK <> COAXIAL

CAV-BXAU04

- Convert a coaxial or SPDIF signal to coaxial and/or SPDIF
- Amplify the incoming signal and extend the distance



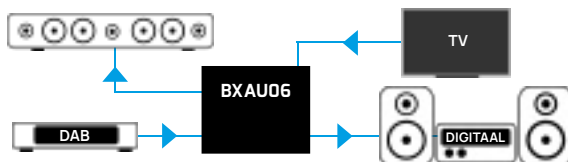
Digitaal input: 1 x Toslink, 1 x RCA coaxiaal
Digitaal output: 1 x Toslink, 1 x RCA coaxiaal

Audioresolutie: 32kHz, 44,1kHz, 48kHz, 96kHz en 192kHz, tot 24-bit
Audioformaat: LPCM2.0 / DTS / Dolby AC3

2-WEG AUDIO CONVERTER DIGITAAL <> ANALOOG

CAV-BXAU06

- Schakel tussen digitaal naar analog of analog naar digitaal
- Creëer een hoofdtelefoon aansluiting

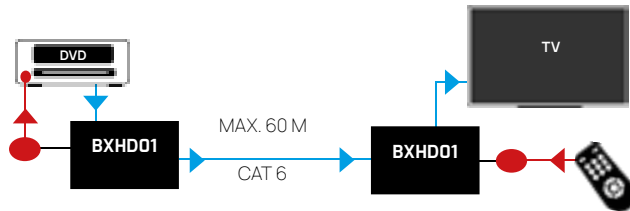


Digitaal: 1 x Toslink in, 1 x Toslink in, 1 x RCA coaxiaal in / out
Analog: 2 x RCA L/R in / out, 1 x 3.5 mm Jack in/out

Audio resolution: 32kHz, 44,1kHz, 48kHz, 96kHz en 192kHz, tot 24-bit
Audio size: LPCM2.0 / DTS / Dolby AC3

HDMI EXTENDER SET CAV-BXHD01

- 1080P Full HD HDMI signaal tot 60 meter verlengen over CAT6
- Inclusief infrarood zender en ontvanger voor bedienen op afstand

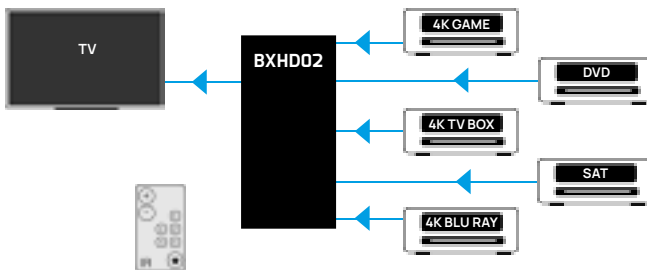


Input transmitter : HDMI in , Infrared in - Output transmitter: RJ45 CAT6
Input receiver : RJ45 /CAT6 - Output receiver: HDMI out , Infrared out

Resolution : 480i, 480p, 576i, 576p, 720p, 1080i & 1080p
POC power over cable

HDMI SWITCH CAV-BXHD02

- Connect up to 5 HDMI sources to one HDMI input
- Favorite and prioritize one source
- Switch manually or with the supplied remote control



4K@60Hz - 600 MHz/ 6.0 Gbps bandwidth per channel - HDCP 2.2 - CEC
Audio: LPCM, DTS, Dolby Digital, DTS-HD Master Audio & Dolby TrueHD

HDMI TO COMPOSITE AV CONVERTER

CAV-BXHD03

- Convert HDMI signal to composite analog
- Make new digital equipment suitable for analog playback



Digital input: 1 x HDMI
Analog output: 1 x CVBS composite video, 2 x RCA R/L

HDMI resolution up to 1080P@60HZ & LPCM audio
Output: Composite swithable PAL576i / NTSC 480i & stereo audio L/R

COMPOSITE AV TO HDMI CONVERTER

CAV-BXHD04

- Convert composite analog to HDMI signal up to 1080p
- Make analog playback suitable for digital equipment



Analog input: 1 x CVBS composite video, 2 x RCA R/L
Digital output: 1 x HDMI

Composite: PAL,NTSC3.58,NTSC4.43,SECAM,PAL/M,PAL/N.
HDMI output: 1080P/60Hz, 720P/60Hz.



REMOTE CONTROL

Does the remote control need to be replaced? The universal Cavus remote control can replace the original for a much lower price. The Cavus remote control is specially pre-programmed and therefore immediately ready for use. To make it even easier we use the familiar look with the same symbols from the original remote control.

SAMSUNG
CRC1



LG
CRC2



SONY
CRC3



PHILIPS
CRC4



PANASONIC
CRC5

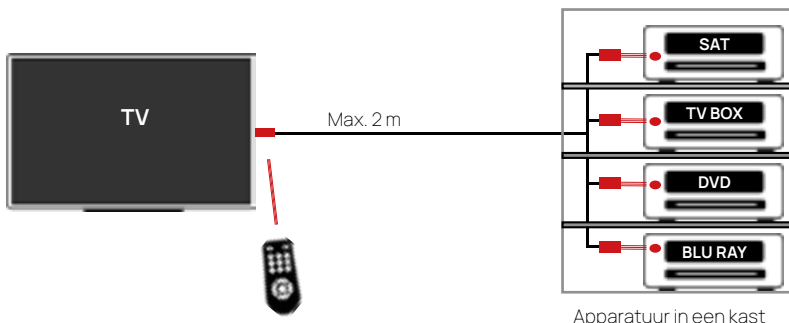


LOEWE
CRC6



IR EXTENSION USB
CAV-BXIR01

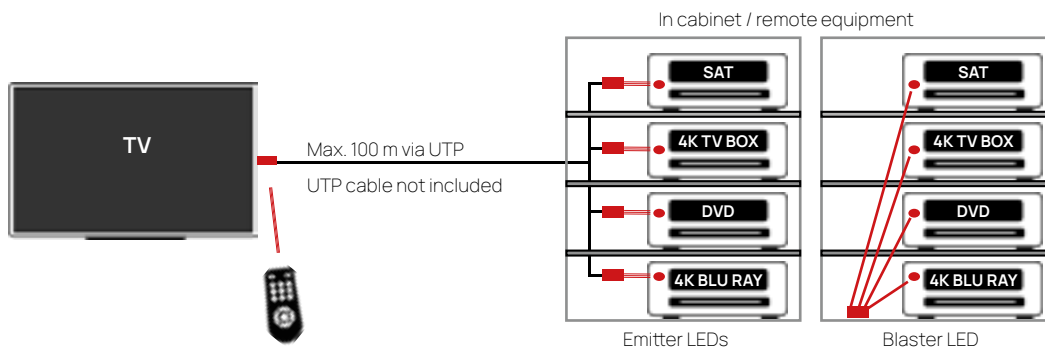
- Operate equipment out of sight
- Use a USB connection as power supply
- 4 x IR emitter leds



IR reach: +/- 10 meter - IR angle: 45° - IR reception indicator LED
IR receiver LED (1M) 4 x IR emitter LEDs (2m)

IR EXTENSION 100 UTP
CAV-BXIR02

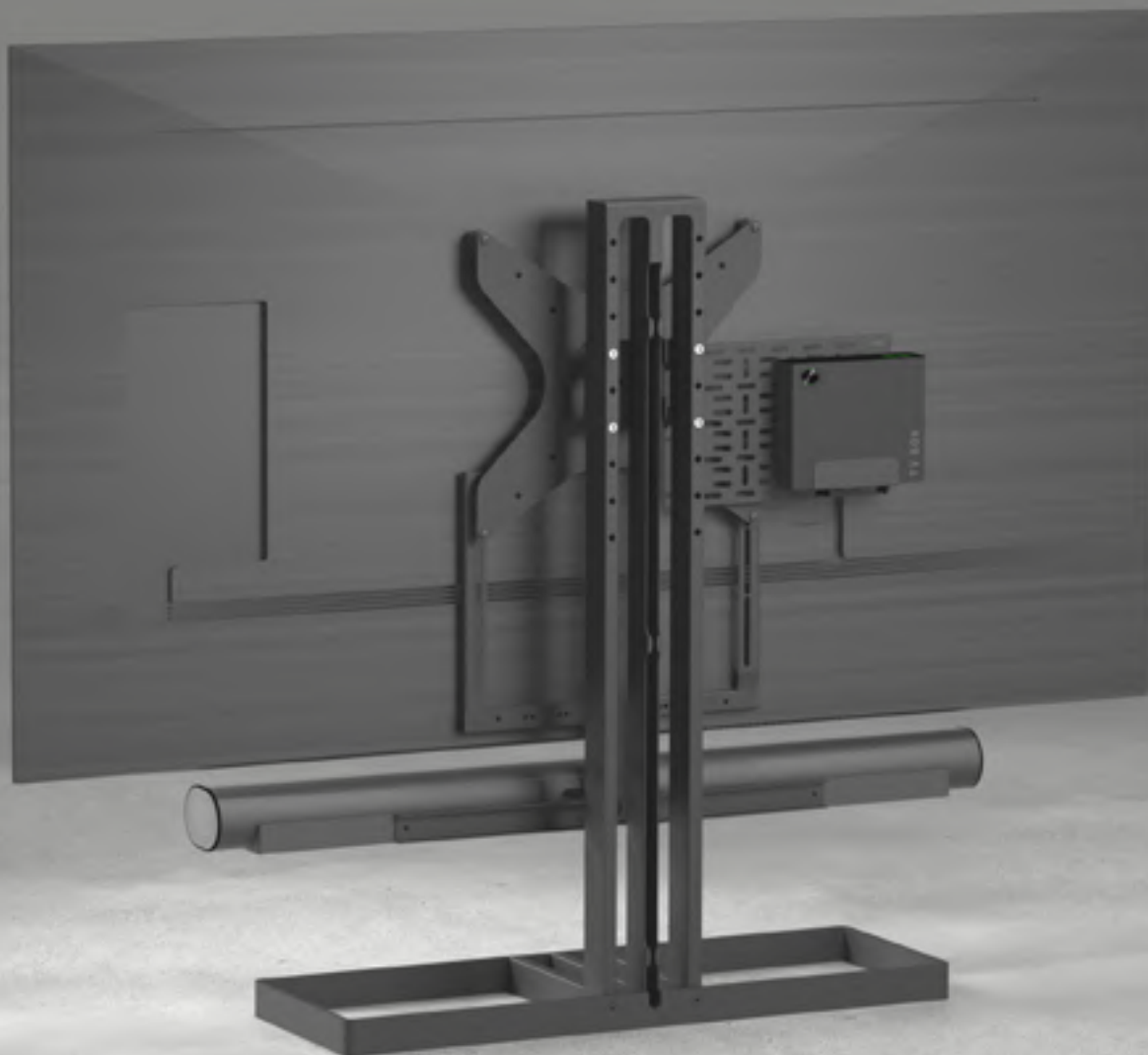
- Operate equipment out of sight or out of reach
- Extend the IR receiver with UTP cable up to 100 meter
- 4 x IR emitter leds & 2 x IR blaster



IR reach +/- 10 meter - IR angle: 45° - IR reception indicator LED
2x IR receiver LED (1M) LEDs (2M) 2 x IR blaster LEDs (2M) - 4 x IR emitter LEDs (2m)

Cavus

TV & AUDIO ACCESSORIES



2022/11